

RESEARCH

Open Access



Comparison of two sedation protocols for long electroretinography in horses using the Kojiman electrode

Corradini Ignacio^{1,2}, López-Murcia María del Mar¹, Barba Marta¹, Zebarjadian Sina¹, Rodilla Vicent³ and Mayordomo-Febrer Aloma^{1*}

Abstract

Background In modern times, horses are utilized not only for labour and transportation purposes but also for recreational activities such as competition and pleasure riding. In these various pursuits, the role of vision plays a crucial role. Electroretinography is the most used test to diagnose diseases of the retinal outer segment. There is a wide variety of devices to perform the electroretinography differing one from each other in the corneal electrode and the light stimulation. The Kojiman electrode has been tested in dogs but not in horses. The main purpose of this study was to compare electroretinography parameters from horses sedated with detomidine alone or in combination with butorphanol, during a standardized protocol using the Kojiman electrode and RETI-port® system. Seven mares were allocated to the detomidine and detomidine plus butorphanol group in a randomised, controlled, crossover study. Friedman and Willcoxon-signed ranked tests were used to compare the electroretinogram parameters. A Student's t-test was used to compare differences in the number of artefacts to valid values ratio obtained under both sedation protocols.

Results Dark adaptation peaked after 16 min under scotopic conditions in both groups. No significant differences in electroretinogram parameters between groups were observed. During the mixed rod and cone response evaluation under scotopic conditions, all mares made a movement of the head resulting in a high number of artefacts. The detomidine plus butorphanol group showed a non-significant tendency to have fewer artefacts and a longer duration of sedation compared to the detomidine group.

Conclusions Detomidine alone or combined with butorphanol may be suitable to use Kojiman electrode and the RETI-port® to perform a standardized long protocol in horses with some adaptations.

Keywords Long electroretinography, Horse, Detomidine, Butorphanol, Kojiman electrode

*Correspondence:

Mayordomo-Febrer Aloma
aloma.mayordomo@uchceu.es

¹Departamento de Medicina y Cirugía Animal, Facultad de Veterinaria, Universidad Cardenal Herrera-CEU, CEU Universities, Tirant lo Blanc, 7, Alfara del Patriarca, Valencia 46115, Spain

²School of Veterinary Medicine and Science, University of Nottingham, Sutton Bonington Campus, Nr Loughborough, LE12 5RD England, UK

³Departamento de Farmacia, Facultad de Ciencias de la Salud, Instituto de Ciencias Biomédicas, Universidad Cardenal Herrera-CEU, CEU Universities, Santiago Ramón y Cajal, s/n., Alfara del Patriarca, Valencia 46115, Spain



© The Author(s) 2023. **Open Access** This article is licensed under a Creative Commons Attribution 4.0 International License, which permits use, sharing, adaptation, distribution and reproduction in any medium or format, as long as you give appropriate credit to the original author(s) and the source, provide a link to the Creative Commons licence, and indicate if changes were made. The images or other third party material in this article are included in the article's Creative Commons licence, unless indicated otherwise in a credit line to the material. If material is not included in the article's Creative Commons licence and your intended use is not permitted by statutory regulation or exceeds the permitted use, you will need to obtain permission directly from the copyright holder. To view a copy of this licence, visit <http://creativecommons.org/licenses/by/4.0/>. The Creative Commons Public Domain Dedication waiver (<http://creativecommons.org/publicdomain/zero/1.0/>) applies to the data made available in this article, unless otherwise stated in a credit line to the data.

Background

The electrodiagnostic test of the eye allows for non-invasive evaluation of the visual pathways from the retina to the cortex. In veterinary practice, the electroretinogram (ERG), also called flash ERG, is widely used to assess the function of the outer layers of the retina and retinal pigment epithelium [1, 2]. The ERG represents the electrical response generated by the retina when stimulated by a brief light stimulus. Compared to ophthalmoscopy, ERG provides a more objective assessment of retinal function. In horses, ERG is routinely used prior to cataract surgery or for objective evaluation of diseases that affect the retina without changes in the ocular fundus examination [3–6]. It can also be utilised to quantify the functional damage of the retina when lesions are observed by indirect ophthalmoscopy [7]. Electroretinography is used in the assessment of other ocular diseases in horses such as equine recurrent uveitis or glaucoma [5].

Guidelines for clinical ERG evaluation have been published for dogs and humans [8]. However, there are few published studies evaluating the normal ERG parameters and its clinical use in horses [1, 5, 9–11].

Electroretinographic examination should ideally be performed under general anaesthesia. However, due to the increased intrinsic risks related to general anaesthesia in horses, standing ERG evaluation under sedation is preferred [12]. Sedation in horses during ERG procedure is essential to prevent free movement artefacts as well as to guarantee a safe access to the head and eyes and to protect the equipment [13]. Alpha-2 agonists and opioids are commonly used for sedation and analgesia in horses [14]. These drugs are known to alter different physiological parameters and certain aspects of ophthalmic examination and ERG in horses and other species [15–25]. Sedation protocols for ERG examination in horses should provide deeper and longer time duration of sedation compared to those used for routine ophthalmic examination [1]. The use of different alpha-2 agonists to perform the electroretinography have been published in horses [1, 7, 9, 10, 13, 26]. However, these do not eliminate all head movements during the procedure, which makes the examination less reliable and more time consuming [12]. Good muscle relaxation, tolerance to electrode placement and absence of head movements are of paramount importance in order to obtain good quality ERG recordings. Unfortunately, this is not always achieved by using only one class of drug [27].

There is evidence of the benefits of combining alpha-2 agonists with opioids (with or without peribulbar anaesthesia) to improve analgesia and sedation during some ophthalmological procedures in different animal species [28–30]. It has also been shown that the combination of detomidine (D) and butorphanol (B) provides better and safer sedation in horses compared to D alone either for

non-painful and painful procedures in standing horses [15, 19].

Many ERG devices are commercially available on the veterinary market, with the primary distinctions among them lying in the light stimulation source and type, as well as the recording system employed. A full-field ERG stimulator (Ganzfeld dome) is preferred in order to obtain an overall response from the retina [2]. However, this has several disadvantages including its high cost, large in size and difficulties in correctly positioning the horse's head for its use. There is one ERG device which has a contact lens electrode with the light emitting diode (LED) incorporated into the eyepiece. This electrode, called Kojiman electrode, has been widely evaluated and used in dogs [31–34], but not in horses. The Kojiman electrode is very light and has the additional advantage of keeping a constant distance between the flash and the retinal surface. These characteristics could present a simple way to perform ERG in the horse.

This study aimed to corroborate the usefulness of the Kojiman electrode to obtain ERG readings in horses and to compare the ERG parameters obtained with the Kojiman electrode using two sedation protocols: D alone or detomidine plus butorphanol (DB).

Results

A level of sedation, characterised by lowering of the head, dropping of the lower lip, ears and upper eyelids was achieved on all animals in both groups. In addition, good akinesia of the upper eyelid was achieved on all eyes after the auriculopalpebral nerve block was performed. No facial or head tremors were observed in any of the study subjects in the DB group.

Rod's adaptation to low intensity flash under scotopic conditions

The implicit time (IT) and amplitude values for the *b* wave at different times during the 20 min dark adaptation period of both anaesthetic protocols (median and interquartile range [IQR]) are shown in Table 1. Dark adaptation peaked at 16 min after initiation of scotopic conditions (T_{16}). The amplitude of *b* wave was significantly lower ($p=0.041$) at T_{20} compared to T_{16} in the D group (206.5 [132–341] μV vs. 276.5 [158–373] μV respectively) (Fig. 1). No significant differences in ERG parameters between both sedation protocols were observed ($p=0.14$).

Mixed rod and cone's response under scotopic conditions

The median [IQR] *a* wave IT and amplitude for the mixed rod-cone response under scotopic conditions (scotopic-mix) were 14.7 [5.9–17.6] ms, 74.3 [9.18–109] μV and 15.7 [13.7–16.7] ms, 95.1 [25.1–159] μV for the D and DB groups respectively. The median [IQR] *b* wave IT and

Table 1 Median and interquartile range [IQR] data of latency (ms) and amplitude (µV) obtained in the detomidine (D) and detomidine plus butorphanol (DB) groups.

	Adaptation-Scotopic						Scotopic mix		Photopic		
	b wave						a wave	b wave	a wave	b wave	
	T ₀	T ₄	T ₈	T ₁₂	T ₁₆	T ₂₀					
D	Latency	47.1 [12.6]	59.6 [11.3]	59.6 [12.2]	62.7 [13.0]	65.1 [13.0]	60.4 [9.4]	14.7 [2.5]	57.8 [3.9]	12.9 [2.3]	27.1 [1.1]
	Amplitude	39.9 [53.7]	191.5 [134.0]	251 [99.7]	265.5 [136.5]	276.5 [94.0]	206.5 [113.5]	74.3 [70.3]	278.0 [148.0]	18.7 [22.6]	134.0 [53.0]
DB	Latency	47.1 [12.8]	59.6 [3.9]	59.6 [9.4]	59.6 [7.9]	59.6 [9.4]	59.6 [5.5]	15.7 [1.00]	59.8 [11.8]	13.5 [2.3]	27.6 [1.1]
	Amplitude	54.9 [66.0]	193 [144.1]	225.5 [78.0]	239 [111.0]	244.5 [87.7]	217.5 [123.5]	95.1 [54.3]	219.0 [216.0]	15.4 [18.7]	145.0 [32.0]

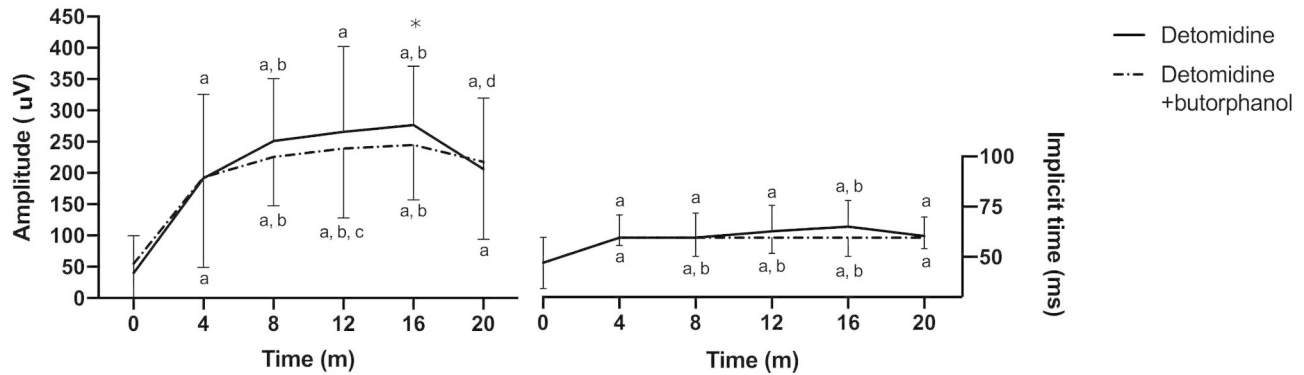


Fig. 1 Median and interquartile range [IQR] amplitude and implicit time (IT) of b wave during the dark adaptation period in both anaesthetic protocols. * $p < 0.05$

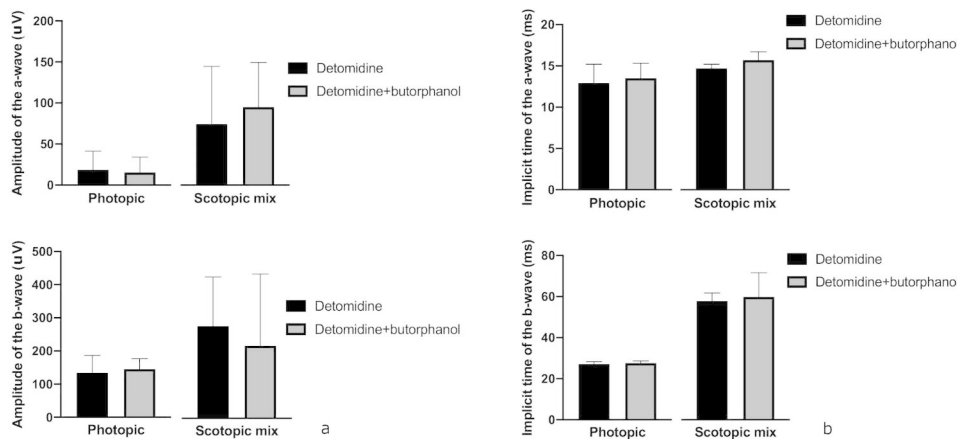


Fig. 2 (a) Median and interquartile range [IQR] amplitude and (b) implicit time (IT) of a and b wave during the scotopic mix (mix rod-cone stimulation) and photopic step in both anaesthetic protocols

amplitude for the mixed rod-cone response were 57.8 [36.3–64.7] ms, 278.0 [94.2–454] µV and 59.8 [36.3–59.8] ms, 219.0 [92.9–443] µV for the D and DB groups respectively (Fig. 2). No significant differences in ERG parameters between both sedation protocols were observed ($p = 0.39$).

Cone and rod response to high intensity flash under photopic conditions

The median [IQR] a wave IT and amplitude under photopic conditions were 12.9 [8.2–16.5] ms, 18.7 [3–43.3] µV and 13.5 [7.6–14.7] ms, 15.4 [3.4–39.9] µV for the D and

DB groups respectively. The median [IQR] b wave IT and amplitude under photopic conditions were 27.1 [25.3–29.4] ms, 134 [29.6–196] µV and 27.6 [26.5–44.7] ms, 145 [71–200] µV for the D and DB groups respectively. No significant differences in ERG parameters between both sedation protocols were observed ($p = 0.31$).

Incidents during the procedure, comparison of correct values, artefacts, and number of repeated sedations between both protocols

There were no complications related to sedation protocols, catheter placement or auriculopalpebral blocking in

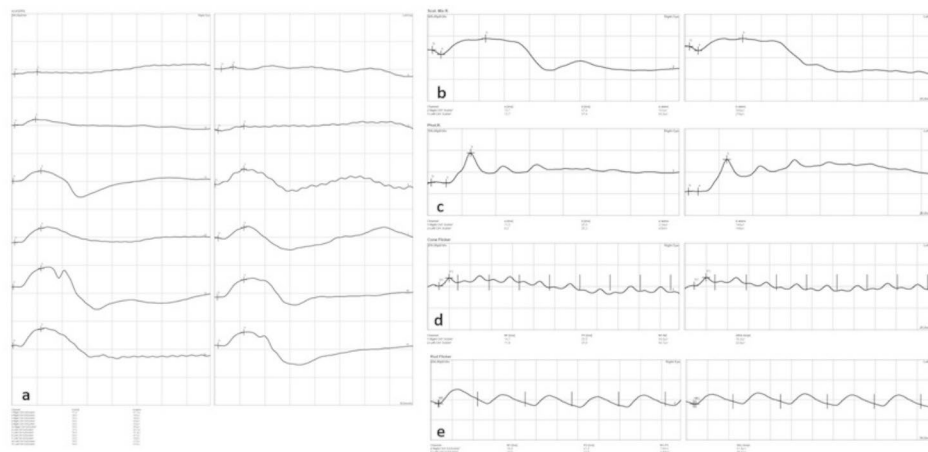


Fig. 3 Representative electroretinography (ERG) obtained with detomidine (D) protocol in both eyes. **(a)** dark adaptation, **(b)** mix rod-cone response, **(c)** photopic response, **(d and e)** cone and rod flicker respectively. (N: flash onset, a: a wave, b: b wave, P: oscillatory potentials latencies)

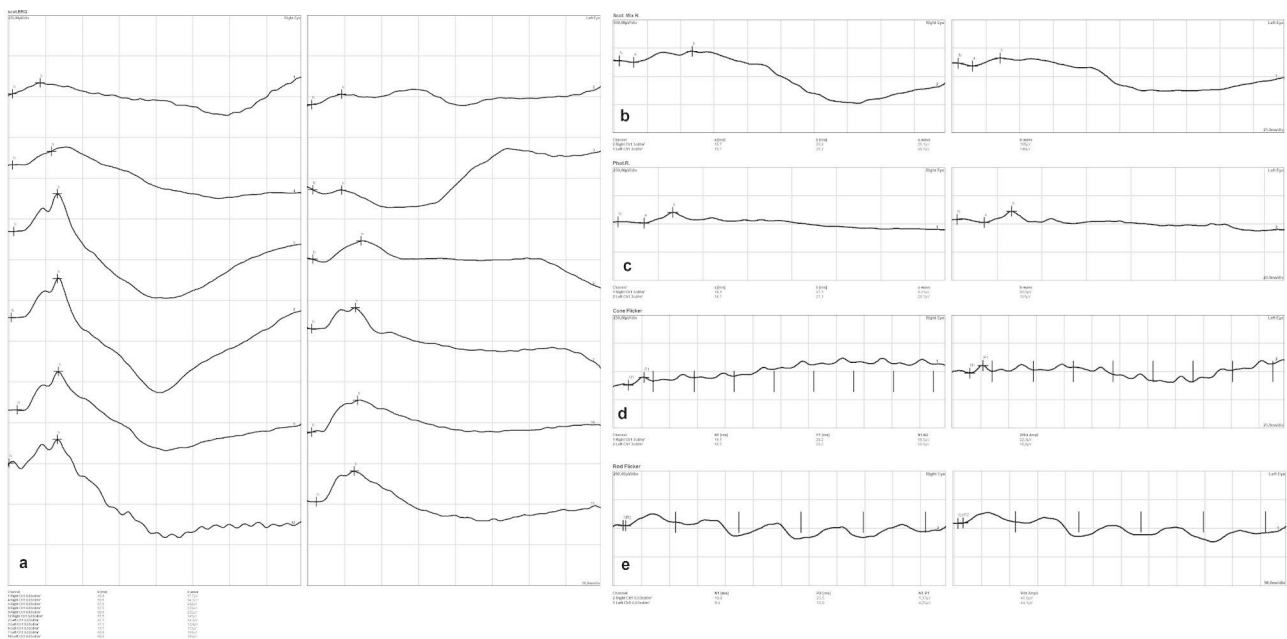


Fig. 4 Representative electroretinography (ERG) obtained with detomidine plus butorphanol (DB) protocol in both eyes. **(a)** dark adaptation, **(b)** mix rod-cone response **(c)** photopic response, **(d and e)** cone and rod flicker respectively. (N: flash onset, a: a wave, b: b wave, P: oscillatory potentials latencies)

any of the mares examined. The fluorescein staining performed at the end of the procedures was negative in all patients. Electroretinographies were carried out without incidents in all steps obtaining adequate curve readings (Figs. 3 and 4). However, during the mixed rod and cone response evaluation under scotopic conditions, while using the 3 cd s m^{-2} flash, all mares made an exaggerated head retreat response. This jerky movement of the head resulted in a very high number of artefacts; in fact, valid recordings were not obtained from 4/14 eyes (all from different mares) in the D group, and from 3/14 eyes (also from different mares) in the group DB.

The mean number of artefacts (measurements rejected automatically by the ERG system) was 103.6 for the D protocol and 94.8 for the DB sedation protocol. There were a lower number of artefacts when D and B were combined, but this difference was not statistically significant. The ratio of artefacts/valid values obtained at 3 cd s m^{-2} was 4.86, indicating that for each valid value, approximately 5 artefacts were recorded. For all other steps of the ERG procedure this ratio was always below 1. The number of repeated sedations required for each protocol did not differ significantly either but was lower in the DB group.

Post-hoc power calculations for each individual ERG parameter

Post-hoc power analysis showed that a power equal to or above 0.8 was reached for 12 of the 20 variables measured, by using an $N=7$ animals. A power of over 0.8 was calculated for critical parameters such as IT and amplitude of *b* wave under scotopic conditions at T_{16} and T_{20} , *a* and *b* wave IT and amplitude during rod and cone response evaluation, and *a* wave IT and *b* wave amplitude during photopic conditions. The required N for the remaining 8 parameters would have ranged from 24 to over 100 animals in the experiment.

Discussion

The present study shows that there are no significant differences in ERG variables, using the Kojiman electrode, in adult mares sedated with either D or a combination of DB.

Studies evaluating the effects of sedation on ERG in horses report the use of alpha-2 agonists alone [3, 13], generally being D the drug of choice [1, 7, 9, 10]. Butorphanol is a *k*-agonist opioid that is commonly used for sedation and for premedication in horses prior to general anaesthesia. The results of this study suggest that D may be insufficient for some individuals that undergo the complete European College of Veterinary Ophthalmology (ECVO) protocol. The RETI-port® adapted ECVO ERG protocol requires a total of 24 values per eye (48 per horse) for the rod response under scotopic conditions (dark adaptation period), 4 values per eye for the combined rod-cone response (scotopic mix function) under scotopic conditions and a total of 24 values per eye under photopic conditions. In this study, there was a tendency for improved efficiency (less artefacts) during the ERG procedure under sedation with DB (94.8 artefacts) compared to D alone (103.6 artefacts); however, these differences were not statistically significant.

Electroretinographic examination should ideally be performed under general anaesthesia. However, anaesthesia-associated mortality in healthy horses is estimated to be much greater than in humans and other domestic animals. Complications include cardiac arrest, fractures or myopathy associated to the anaesthesia, post-anaesthetic myelopathy and neuropathies, among other complications [12, 35].

Drugs used for sedation and anaesthesia in animals can affect the results of ophthalmic examination; for instance, differences in tear production and intraocular pressure have been documented in experimental animals, dogs and horses given different sedatives and anaesthesia [16, 21, 22, 25, 36, 37]. According to several studies, electroretinography parameters can also be altered by the type of sedation and anaesthetic protocol [38–40]. However, no significant differences in *a* and *b* wave complexes were

observed in a study comparing 4 different alpha-2 agonists in horses [13].

The effects of a combined sedation protocol using alpha-2 agonists with B on ERG parameters has not been previously evaluated in horses. In our study, this combination did not affect significantly ERG parameters compared to sedation with D alone.

It was difficult to obtain full recordings during the scotopic-mix step (rod-cone response to a high intensity flash of 3 cd s m^{-2} , in the dark) with either protocol. In this step, many mares reacted by jerking their heads and generating an elevated number of artefacts. This observation has not been reported in previous studies utilising the same ERG protocol in D sedated horses. This could be due to the utilization of a distinct active electrode (ERG-jet™) and light source (mini-Ganzfeld electroretinographic unit) in other studies [7, 10]. It may be necessary to re-evaluate the flash intensity used during ERG when utilising the RETI-port® and the Kojiman electrode. Alternatively, testing different sedation protocols to deepen the level of sedation or exploring other sedatives agents could be considered.

Similar to the study by Church and Norman (2012), there was a high variability in the measurements of wave amplitudes between horses in this study. This was particularly evident for the amplitude of the *b* wave during scotopic conditions under both sedation protocols (Table 1). The *b* wave amplitudes ranged from 94.2 to 454 μV , being the largest variability seen at $T_{4'}$, T_{20} of the dark adaptation period, and at the scotopic mix step. The observed variations in ERG readings may have multiple contributing factors, such as variations in electrode placement, eye movement, pupillary dilation, different eye sizes and corneal curvature. In this sense, care was taken to adequately dilate the pupil, sedate, induce palpebral akinesia and provide appropriate head support to prevent additional sources of motion.

Peak adaptation to scotopic conditions occurred after 16 min in our study. For both protocols, *b* wave amplitudes gradually increased up to 16 min of dark adaptation being this difference statistically significant compared to T_0 ($p < 0.05$) in both groups. The *b*-wave amplitude decreased at T_{20} of dark adaptation compared to T_{16} ; however, this decrease was only found to be statistically significant in the D group (Fig. 5). The IT gradually increased during the first 16 min of dark adaptation only in the D group ($p < 0.05$). Other studies have shown that dark adaptation takes longer in horses (30 min and even shown fluctuations with peaks in adaptation after 30 min to up to 1 h) [7, 9, 11]. This study was not originally designed to determine dark adaptation times; hence the dark adaptation time was limited to 20 min based on previous reports and the ECVO ERG protocol. The disparities observed here could be due to differences in pre-dark

adaptation times, since horses were kept for several days in the same stalls under similar lighting conditions. In the examination room, they were kept under equal lighting conditions for 20 min and then the dark adaptation took place at 0 lx. During the 20 min prior to dark adaptation, luxmeters readings were higher than those reported for studies evaluating dark adaptation times in horses.

Limitations of the study

Unfortunately, this study did not collect the data relating to the number or amplitude of head or body movements; hence, we were unable to carry out a statistical analysis comparing head and body movements between both sedation protocols. It is recommended that future studies focus on differences in head and body movements (using accelerometers, 2D or 3D head tracking, video-recording or similar technologies) when comparing different sedatives for ERG in horses.

Furthermore, in this study the evaluators were not blinded to the sedative being used which could have affected the perceived outcome and introduced a bias. It is also possible that the lack of statistical significance observed could be attributed to the relatively small sample size examined in this study. Regarding this matter, the sample size is relatively small to be able to reject the null hypothesis in 8 of the 20 ERG parameters recorded. However, it was found that the power of the test was in excess of 80% in critically important parameters such as *b* wave IT and amplitude under scotopic conditions at T_{20} and during mixed rod-cone response, as well as for some of the ERG parameters obtained during photopic conditions. Thus, increasing the sample size from 7 animals to more than 20 was not ethically, scientifically nor monetarily justified in the authors' opinion.

Lastly, the Kojiman electrode used in our study has a 17 mm ring that contacts directly with the cornea. Considering that the horse's eye is large, compared to the dog, it is possible that the electrode may not stimulate the whole retina in a uniform fashion due to slightly different positioning between measurements. It is worth noting that another ring exists that may be suitable for use in larger animals (34 mm), but this ring was not available during this study. It is plausible that the larger ring might provide a steadier position over the cornea, as its diameter and curvature may adapt better to the horse's eye. The authors were unable to find any studies comparing the accuracy of both rings for its use in horses along with the RETI-Port®. Further studies are needed to compare these two rings and to test for other potential sources of variability with this equipment arrangement.

Conclusions

The Kojiman electrode and the RETI-port® are devices that can be used to carry out the ECVO standard ERG long protocol. However, further studies are needed to determine if certain adaptations, such as lowering the flash intensity during the mixed rod-cone step, are needed. Future work comparing both, the large and small Kojiman contact rings are necessary to confirm if this adaptor would reduce the variability of the data obtained with this equipment in horses.

Both anaesthetic protocols are suitable for performing ERG in horses with the Kojiman electrode. The combination of D with B provided recordings with fewer artefacts than D alone; although, these findings were not statistically significant.

Methods

Animals and study design

Seven healthy crossbreed mares, ranging from 12 to 17 years old, from the teaching herd of the University CEU Cardenal Herrera, were enrolled in the study. All patients were weighed before entering the examination room and a complete physical examination was performed. Only healthy, non-pregnant mares were included in the study. Heart rate, respiratory rate, qualitative assessment of the mucous membranes, borborygmi and rectal temperature were monitored before sedation. However, no follow-up measurements were recorded as the effect of sedation on these physiological parameters was out of the scope of the present study.

Sample size was calculated based on the difference of *b* wave amplitude under scotopic conditions observed on a previous study comparing the effects of different alpha-2 agonist sedatives on ERG parameters in horses [13]. From those results, a standard effect size of 2.3 was calculated based on data showing that horses sedated with romifidine had an increased *b* wave amplitude of $358.5+78.4$ μ V compared to $171.2+84.0$ μ V in horses sedated with D [13]. Four animals were needed to detect a difference in *b* wave amplitude under scotopic conditions with a type I error of 0.05 and a power of 0.8 for a two-tailed Wilcoxon signed-rank test. To account for possible failure to obtain measurements, the procedure was performed in an additional three mares.

All animals were randomly assigned to the D group, positive control group, and DB group in a crossover study with a washout period of a minimum of 7 days. The evaluators were not blinded to the sedation being used. In the DB group, D was administered first, followed by the B three minutes later to prevent potential undesired side effects such as facial and head tremors induced by the B.



Fig. 5 Electrode placement in a sedated mare resting the head over a padded head support. **(a)** ground electrode over the occipital bone. **(b)** reference electrode on the lateral canthus of the right eye

Ophthalmic examination

The ocular examination included vision assessment (menace response, dazzle and pupillary light reflexes), evaluation of corneal and palpebral reflexes, slit-lamp examination of the anterior segment (Kowa SL-15°, Kowa Optimed, USA), intraocular pressure measurement using a rebound tonometer (TonoVet iCare®, Icare, Finland) and fluorescein staining to assess the integrity of the corneal epithelium. The ocular fundus was evaluated after pupillary dilation, necessary to carry out the ERG test, using the Panoptic ophthalmoscope (PanOptic®, WellchAllyn, United Kingdom) and the direct ophthalmoscope (WellchAllyn, United Kingdom).

ERG preparation

All horses were stalled in the same hospital area under similar light conditions for a minimum of one week prior to the study. In addition, all procedures were performed in the same room, with the same light arrangements. To ensure that all animals were tested under the same light conditions, all ERG procedures were performed between 9:30 and 13:00 h. In addition, two luxmeters (Portable luxmeter, Urceri® and MT-30 Digital Lux Meter 200,00 lx) were used to guarantee similar lighting conditions during the preadaptation period and the different stages of ERG examination. One luxmeter was placed at the horse's eye level, secured to the right front poll of the stocks, and the other luxmeter was placed on top of the ERG equipment to the left front of the stocks. Both luxmeters recorded 0 lx during the scotopic phase of ERGs.

Tropicamide (0.2 ml of a 1% solution, Colircusí Tropicamida® 10 mg/ml, Alcon, Spain) was applied to both eyes to induce pharmacological mydriasis every 5 min, until complete dilatation was achieved.



Fig. 6 Kojiman electrode positioned over the left cornea, just before to start the photopic stimulation

Sedation was administered through a 14-gauge teflon catheter placed on the left jugular vein, using one of the following sedation protocols: D (Sedaquick®, Fatro, Spain) (15 µg/kg) or D and B (Butomidol, Richter Pharma AG, Austria) (15 µg/kg for both products). If required, a rescue dose was administered (5 µg/kg of D for the D group, or 5 µg/kg of each of the drugs for the DB group).

An auriculopalpebral nerve block was performed bilaterally by injecting 1.5 ml of a 2% lidocaine solution (Lidocaína inj. 2%, B. Braun, Spain) after sedation.

To improve horses' wellbeing and to provide additional stabilization of the head, a padded head support attached to the stock's door was used.

Electrode set-up and recording equipment

Titanium subdermal needle electrodes (Roland Consult, Germany) were placed subcutaneously 3 cm caudal to the lateral canthus of the eye being evaluated (reference electrode) and at a central location over the occipital bone (ground electrode) (Fig. 5). Both electrodes were secured to the halter with medical tape. A monocular LED contact electrode (Kojiman electrode 17 mm contact ring, An-vision, Germany) was placed over the cornea (active electrode) and was gently held by the operator during the procedure (Fig. 6). Prior to electrode placement, 0.2 ml of topical anaesthetic (Colircusí anestésico doble®, Alcon, Spain) was applied to both eyes. To avoid damaging the

corneal surface and to ensure good contact between the electrode and the cornea, a generous amount of lubricant gel (Lubrithal™, Dechra, Spain) was applied to the electrode as needed during the procedure. To ensure accurate delivery of flash duration and intensity, the manufacturer calibrated the flash of the unit prior to the start of the study.

Testing protocol

Electrodes were connected to the RETI-port® ERG-system (Roland Consult, Germany) and impedance to ground was measured for both the active and the reference electrodes. The flash duration was set at 10 ms and the light intensities varied between 0.01 cd s m⁻² and 3 cd s m⁻² depending on the step of the protocol.

Scotopic and photopic ERGs were recorded, from both eyes of each mare, using a standard long ERG protocol (Table 2) following the guidelines for clinical ERG in the dog set by the ECVO. These guidelines were published by Narfstrom in 2002 and updated by Ekesten et al. in 2013 [2, 41].

Data analysis

Data were analysed using SPSS® 24.0.0.0^c by means of the Wilcoxon-signed rank (matched pairs) test to compare IT and amplitude of *a* and *b* waves between the D (n=7) and DB (n=7) groups. Assumptions of normal data distribution evaluated using the Shapiro-Wilk test, histograms and Q-Q plots were not met.

Data are presented as median and [IQR]. Multiple comparisons for repeated measures within treatment for both, IT and amplitude of *a* and *b* waves, were performed using the Friedman test. In addition, a Student's t-test was used to compare differences in the number of artefacts, valid values, and the ratio of artefacts against valid values between sedation protocols as these data showed a normal distribution. Differences were considered statistically significant when $p \leq 0.05$. The ratio of artefacts (invalid readings) to valid readings was calculated for all the steps of the protocol. Ratios over 1 meant that for each valid reading obtained more than 1 flash was necessary at any given step of the process. None of the data were excluded from the analysis.

Post-hoc power calculations were made for each parameter measured during the ERG protocol.

List of Abbreviations

D	Detomidine
B	Butorphanol
DB	Detomidine and butorphanol
ECVO	European College of Veterinary Ophthalmology
ERG	Electroretinogram
IQR	Interquartile range
IT	Implicit time
LED	Light emitting diode

Table 2 Summary of the European College of Veterinary Ophthalmology (ECVO) recommended electroretinography (ERG) protocol [1, 22]:

ERG step	Total duration	Cells evaluated	Flash intensity
Dark adaptation	20 min	Rod evaluation: at 0 (10 s after dark adaptation), 4, 8, 12, 16 and 20 min.	0.01 cd s m ⁻²
Dark (scotopic mix)	Immediately after dark adaptation	Mixed rod-cone response evaluation with a single flash	3 cd s m ⁻²
Light adaptation	10 min	Cone response evaluation with a single flash	3 cd s m ⁻²
Flicker test	Immediately after light adaptation		3 cd s m ⁻²

Acknowledgements

The authors thank all veterinary teaching hospital staff, especially the interns and students, for their excellent assistance and support provided, and Luke McLinden for proofreading the manuscript.

Author contributions

IC has participated on the conceptualization, investigation, project administration and resources, data curation and formal analysis as well as writing the original draft, reviewing and editing the manuscript. MMLM has collaborated on the conceptualization, project administration and resources, funding acquisition, investigation, reviewing and editing the manuscript. MB has collaborated on the conceptualization, project administration and resources, investigation, reviewing and editing the manuscript. SZ has participated on the investigation, reviewing, and editing the manuscript. VR has collaborated on the methodology, reviewing, and editing the manuscript. AMF has collaborated on the conceptualization, project administration and resources, funding acquisition, supervision, writing the original draft and reviewing and editing the manuscript.

Funding

This study was made possible by the research and publication funds (reference #IDOC18-13 and #INDI22/36) from the Universidad Cardenal Herrera-CEU, CEU Universities, Valencia, Spain. The funding sources were used to carry out the procedures to obtain the data and for the article-processing charge.

Data Availability

All the data that support the findings of this study are available from the corresponding author upon reasonable request.

Declarations

Competing interests

The authors declare no competing interests.

Ethics approval and consent to participate

This study was performed in accordance with the Association for Research in Vision and Ophthalmology Statement for the Use of Animals in Ophthalmic and Vision Research and was approved by the corresponding Institutional Animal Welfare Committee of the University CEU Cardenal Herrera of Valencia (Spain) (code: 2018/VSC/PEA/0223). This study is reported in accordance with ARRIVE guidelines.

Consent for publication

Not applicable.

Received: 23 January 2023 / Accepted: 14 July 2023

Published online: 04 August 2023

References

1. Ben-Shlomo G, Plummer C, Barrie K, Brooks D. Characterization of the normal dark adaptation curve of the horse. *Vet Ophthalmol*. 2012 Jan;15(1):42–5.
2. Ekesten B, Komáromy AM, Ofri R, Petersen-Jones SM, Narfström K. Guidelines for clinical electroretinography in the dog: 2012 update. *Doc Ophthalmol*. 2013 Oct;127(2):79–87.
3. Sandmeyer LS, Bellone RR, Archer S, Bauer BS, Nelson J, Forsyth G, et al. Congenital stationary night blindness is associated with the leopard complex in the miniature horse. *Vet Ophthalmol*. 2012 Jan;15(1):18–22.
4. Nunnery C, Pickett JP, Zimmerman KL. Congenital stationary night blindness in a Thoroughbred and a Paso Fino. *Vet Ophthalmol*. 2005;8(6):415–9.
5. Ben-Shlomo G. The equine Fundus. *Vet Clin North Am Equine Pract*. 2017 Dec;33(3):499–517.
6. Pollio D, Michau TM, Weaver E, Kuebelbeck KL. Electroretinographic changes after intravenous lipid emulsion therapy in a dog and a foal with ivermectin toxicosis. *Vet Ophthalmol*. 2018 Jan;21(1):82–7.
7. Allbaugh RA, Ben-Shlomo G, Whitley RD. Electroretinogram evaluation of equine eyes with extensive 'bullet-hole' fundic lesions. *Vet Ophthalmol*. 2014 Jul;17(Suppl 1):129–33.
8. McCulloch DL, Marmor MF, Brigell MG, Hamilton R, Holder GE, Tzekov R, et al. ISCEV Standard for full-field clinical electroretinography (2015 update). *Doc Ophthalmol*. 2015 Feb;130(1):1–12.
9. Komáromy AM, Andrew SE, Sapp HL, Brooks DE, Dawson WW. Flash electroretinography in standing horses using the DTL microfiber electrode. *Vet Ophthalmol*. 2003 Mar;6(1):27–33.
10. Church ML, Norman JC. Electroretinogram responses of the normal thoroughbred horse sedated with detomidine hydrochloride. *Vet Ophthalmol*. 2012 Sep;15(Suppl 2):77–83.
11. Wouters L, de Moor A, Moens Y. Rod and cone components in the electroretinogram of the horse. *Zentralbl Veterinarmed A*. 1980 Jun;27(4):330–8.
12. Gilger B, Stoppini R. Equine ocular examination: routine and advanced diagnostic techniques. In: Gilger B, editor. *Equine Ophthalmology*. 2nd ed. Missouri: Saunders Elsevier; 2011. pp. 1–51.
13. Rosa M, Landgraf Botteon P, Pereira J, Brooks D, Dias Rosa M. Evaluation of equine electroretinographic responses by using two different electrodes and four different Alpha-2 agonist sedatives. *Rev Bras Med Vet*. 2014;36(4):367–74.
14. Zeiler GE. A review of clinical approaches to antagonism of alpha₂-adrenoreceptor agonists in the horse. *Equine Vet Educ*. 2015 Jan;27(1):48–54.
15. de Grauw J, van Loon T. Clinical effects of two doses of butorphanol with detomidine for intravenous premedication of healthy warmblood horses. *Vet Anaesth Analg*. 2020 Sep;47(5):681–5.
16. Dodam JR, Branson KR, Martin DD. Effects of intramuscular sedative and opioid combinations on tear production in dogs. *Vet Ophthalmol*. 1998;1(1):57–9.
17. England GC, Clarke KW, Goossens L. A comparison of the sedative effects of three alpha 2-adrenoceptor agonists (romifidine, detomidine and xylazine) in the horse. *J Vet Pharmacol Ther*. 1992 Jun;15(2):194–201.
18. Frigerio MA, Gómez Cisneros D, Santiago Llorente I, Manso-Díaz G, López-Sanromán J. A kinematic comparison of the locomotor pattern of horses sedated with detomidine alone and in combination with low doses of butorphanol. *Equine Vet J*. 2019 Nov;51(6):825–30.
19. Krulic P, Nemeč A. Electroencephalographic and electromyographic changes during the use of detomidine and detomidine-butorphanol combination in standing horses. *Acta Vet Hung*. 2006 Mar;54(1):35–42.
20. Lavoie JP, Phan ST, Blais D. Effects of a combination of detomidine and butorphanol on respiratory function in horses with or without chronic obstructive pulmonary disease. *Am J Vet Res*. 1996 May;57(5):705–9.
21. Leonardi F, Costa GL, Stagnoli A, Zubin E, Boschi P, Sabbioni A, et al. The effect of intramuscular dexmedetomidine-butorphanol combination on tear production in dogs. *Can Vet J*. 2019 Jan;60(1):55–9.
22. Leonardi F, Costa GL, Dubau M, Sabbioni A, Simonazzi B, Angelone M. Effects of intravenous romifidine, detomidine, detomidine combined with butorphanol, and xylazine on tear production in horses. *Equine Vet Educ*. 2020 Aug 21;32(S11):53–7.
23. Nyman G, Marntell S, Edner A, Funkquist P, Morgan K, Hedenstierna G. Effect of sedation with detomidine and butorphanol on pulmonary gas exchange in the horse. *Acta Vet Scand*. 2009 May;7(1):22.
24. Robertson JT, Muir WW. A new analgesic drug combination in the horse. *Am J Vet Res*. 1983 Sep;44(9):1667–9.
25. Selk Ghaffari M, Brooks DE, Sabzevari A, Ghamsari SM, Mansoor Lakoooraj H, Shad H. Effects of Intravenous Detomidine on Schirmer Tear Test results in clinically normal horses. *J Equine Vet Sci*. 2017 Aug;55:97–9.
26. Sandmeyer LS, Bauer BS, Grahn BH. Diagnostic ophthalmology. *Can Vet J*. 2012 Jan;53(1):96–8.
27. Robertson SA. Standing sedation and pain management for ophthalmic patients. *Vet Clin North Am Equine Pract*. 2004 Aug;20(2):485–97.
28. Interlandi C, Calapai G, Nastasi B, Mannucci C, Morici M, Costa GL. Effects of Atipamezole on the analgesic activity of Butorphanol in rats. *J Exot Pet Med*. 2017 Oct;26(4):290–3.
29. Costa GL, Cristarella S, Quartuccio M, Interlandi C. Anti-nociceptive and sedative effects of romifidine, tramadol and their combination administered intravenously slowly in ponies. *Vet Anaesth Analg*. 2015 Mar;42(2):220–5.
30. Costa GL, Leonardi F, Interlandi C, Spadola F, Fisichella S, Macri F et al. Levobupivacaine Combined with Cisatracurium in Peribulbar Anaesthesia in Cats Undergoing Corneal and Lens Surgery. *Animals (Basel)*. 2023 Jan 1;13(1).
31. Jeong MB, Son WG, Park YW, Kim SE, Park SA, Seo KM. Comparison of two electroretinography systems used in dogs: the HMsERG and the RETIport. *J Vet Med Sci*. 2011 Apr;73(4):431–8.
32. Kim HA, Jeong MB, Yi NY, Park SA, Kim WT, Kim SE et al. Effects of stimulus intensity for electroretinogram in conscious miniature schnauzers. *J Vet Med Sci* 2008 Aug;70(8):857–9.
33. Maehara S, Itoh Y, Hoshino S, Hayashi M, Ito Y. Dark adaptation time in canine electroretinography using a contact lens electrode with a built-in light source. *J Vet Med Sci*. 2015 Oct;77(10):1335–8.
34. Yu HA, Jeong MB, Park SA, Kim WT, Kim SE, Chae JM, et al. The determination of dark adaptation time using electroretinography in conscious miniature Schnauzer dogs. *J Vet Sci*. 2007 Dec;8(4):409–14.
35. Dugdale AHA, Taylor PM. Equine anaesthesia-associated mortality: where are we now? *Vet Anaesth Analg*. 2016 May;43(3):242–55.
36. Joyner RL, Liu CC, Cremer J, Carter RT, Lewin AC. Intraocular pressure following four different intravenous sedation protocols in normal horses. *Equine Vet J*. 2021 May;53(3):612–7.
37. Mayordomo-Febrer A, Rubio M, Martínez-Gassent M, López-Murcia MM. Effects of morphine-alfaxalone-midazolam premedication, alfaxalone induction and sevoflurane maintenance on intraocular pressure and tear production in dogs. *Vet Rec*. 2017 May;13(19):474.
38. Freeman KS, Good KL, Kass PH, Park SA, Nestorowicz N, Ofri R. Effects of chemical restraint on electroretinograms recorded sequentially in awake, sedated, and anesthetized dogs. *Am J Vet Res*. 2013 Jul;74(7):1036–42.
39. Susanti L, Kang S, Park S, Park E, Park Y, Kim B, et al. Effect of three different sedatives on Electroretinography Recordings in domestic pigeons (*Columba livia*). *J Avian Med Surg*. 2019 Jun;33(1):115–22.
40. Del Sole MJ, Nejamkin P, Cavilla V, Schaiquevich P, Moreno L. Comparison of two sedation protocols for short electroretinography in cats. *J Feline Med Surg*. 2018 Feb;20(2):172–8.
41. Narfström K, Ekesten B, Rosolen SG, Spiess BM, Percicot CL, Ofri R, et al. Guidelines for clinical electroretinography in the dog. *Doc Ophthalmol*. 2002 Sep;105(2):83–92.

Publisher's Note

Springer Nature remains neutral with regard to jurisdictional claims in published maps and institutional affiliations.