

## Article

# Prevalence of *Toxocara* Eggs in Public Parks in the City of Valencia (Eastern Spain)

Belinda Rose Köchle <sup>1</sup>, María Magdalena Garijo-Toledo <sup>2,\*</sup> , Lola Llobat <sup>2</sup>  and José Sansano-Maestre <sup>1,\*</sup>

<sup>1</sup> Department of Animal Production and Public Health, Faculty of Veterinary Medicine and Experimental Sciences, Universidad Católica de Valencia San Vicente Mártir, Calle Guillem de Castro, 94, 46003 Valencia, Spain; riucv@ucv.es

<sup>2</sup> Department of Animal Production and Health, Public Veterinary Health and Food Science and Technology, Faculty of Veterinary Medicine, Universidad Cardenal Herrera-CEU, CEU Universities, Calle Tirant Lo Blanc, 7, 46115 Valencia, Spain; maria.llobatbordes@uchceu.es

\* Correspondence: marilena@uchceu.es (M.M.G.-T.); jose.sansano@ucv.es (J.S.-M.); Tel.: +34-961369000 (M.M.G.-T.); Fax: +34-961395272 (M.M.G.-T.)

**Abstract:** *Toxocara* spp. is one of the most common zoonotic geohelminths in the world. Its infections are associated with the accidental ingestion of contaminated soil and affecting, especially children. In this study, feces, and soil samples from 14 public parks in the city of Valencia were analyzed. The Telemann method and a modified version of a sieving technique were used to process feces and soil, respectively. None of the fecal samples and 10.9% of soil samples from five parks (35.7%) tested positive for the presence of *Toxocara* eggs. The most contaminated areas were the canine sanitary parks (30.8% of the samples), followed by socialization areas for dogs (9.7%); no positive samples were found at children's playgrounds. Our results suggest that most pets in Valencia are periodically dewormed, although additional preventive measures should be applied, since the risk of infection exists probably due to the presence of stray dogs and feral cats.

**Keywords:** parasitic zoonoses; public parks; pets; Spain; *Toxocara*



**Citation:** Köchle, B.R.; Garijo-Toledo, M.M.; Llobat, L.; Sansano-Maestre, J. Prevalence of *Toxocara* Eggs in Public Parks in the City of Valencia (Eastern Spain). *Vet. Sci.* **2022**, *9*, 232. <https://doi.org/10.3390/vetsci9050232>

Academic Editor: Stefania Hanau

Received: 6 April 2022

Accepted: 9 May 2022

Published: 11 May 2022

**Publisher's Note:** MDPI stays neutral with regard to jurisdictional claims in published maps and institutional affiliations.



**Copyright:** © 2022 by the authors. Licensee MDPI, Basel, Switzerland. This article is an open access article distributed under the terms and conditions of the Creative Commons Attribution (CC BY) license (<https://creativecommons.org/licenses/by/4.0/>).

## 1. Introduction

The most prevalent zoonoses related to geohelminths around the world are *Toxocara* spp., *Ancylostoma* spp., and *Strongyloides* spp., which are responsible for more than two billion infections in people around the world [1], as well as important costs associated with these infections [2]. Nematodes of the genus *Toxocara* are responsible for human toxocariasis (HT), one of the five neglected parasitic diseases with priority for public health action [3]. This genus includes two species, *T. canis* and *T. cati*, whose definitive hosts are dogs and cats, respectively. Infected animals shed eggs with their feces in the environment, where they can remain viable for years in shady, humid soils and at cool temperatures [4,5]. Humans, especially children, are accidental hosts when exposed to contaminated soils via the fecal-oral route [6,7]. Several clinical forms of HT are described: (1) covert/common (the most frequent), (2) visceral larva migrans (VLM), and (3) ocular larva migrans (OLM) [8]. Non-specific symptoms, such as fever, abdominal pain, and asthma, can be seen with covert toxocariasis [9,10]. VLM and OLM are both primarily diagnosed in young children, the first one including clinical manifestations related to inflammation of the internal organs, such as asthma or myelitis [11–16], and cutaneous reactions [17]. OLM runs with visual loss, strabismus, or retinal granuloma [8,12]. Occasionally, the central nervous system can be affected in middle-aged patients, which is called neurotoxocariasis [18,19], and has been linked to meningoencephalitis, epileptic seizures, and neurodegenerative disorders [20–26].

Public parks and sandpits are an important source of infection for children, since dogs and cats share public areas with them [27]. A fifth of the public places in the world are contaminated with *Toxocara* eggs, with prevalence rates ranging from 13 to 35%, depending

on the geographical area [5]. In the Iberian Peninsula, the prevalence in public parks varies between 16.4% in Madrid [28], 37% in Tenerife [29], 45.5% in Córdoba [30], 50% in Lisbon [31], and 67% in Murcia [32]. The main objective of this study is to determine the presence of *Toxocara* eggs in soil samples and dog feces recovered in public areas with different human and animal presence in the city of Valencia, in order to suggest the risk of human infection with these zoonotic species, and to establish more effective prevention and control measures than those that are used currently.

## 2. Materials and Methods

### 2.1. Study Design and Collection of Samples

The study was carried out in 14 public parks located within the most populated zones of the city of Valencia (in the east of the Iberian Peninsula), with an estimated population of about 800,000 inhabitants (Figure 1). The selection criteria were the presence of canine socialization areas (SO), canine sanitary areas (SA), and/or children's playgrounds (CP) (Figure 2). The study was carried out between November 2018 and June 2019. Fecal and soil samples were randomly collected from the three types of areas. Initially, the most recent feces were taken randomly from the ground. After that, the surface area was divided into transects according to the extension, and soil samples were taken systematically along transect lines approximately 10 m apart. Soil samples were collected with a garden shovel, at a depth of 2 to 5 cm on a 10 cm surface and weighing approximately 200 g each. Only stool samples with a fresh appearance were selected. The number of samples varied according to the park size. Sampling in the SO with a large extension started in a corner of the enclosure, and progressed through transects until the entire study surface was covered, picking up samples with a minimum distance of five meters between the points of collection. In the CP with rubber flooring, soil samples were taken from the perimeter. To minimize time-conditioned selection bias, sampling was carried out during three different moments of the day: morning, midday, and afternoon. All samples were stored in individual bags at 4 °C until they were analyzed, for a maximum of two days. Each bag was marked with the following characteristics: date of collection, name of the park, type of sample (sand, feces), and park area (SO, SA, CP).

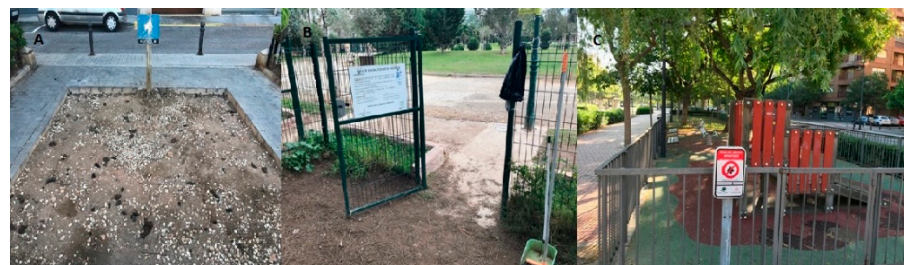


**Figure 1.** Map of the metropolitan area of Valencia, highlighting the positive (red stars) and negative (blue circles) parks to *Toxocara* spp. eggs. Numbers inside correspond to references to the park according to Table 1.

**Table 1.** Prevalence of *Toxocara* spp. eggs in soil and feces from parks in Valencia. Distribution of positive samples regarding the area of collection.

Reference Number	Park Name	+ <i>Toxocara</i> spp. Egg	Sampling Area *	N° Soil Samples	+ Soil Samples (%)	N° Feces Samples	+ Feces Samples	
Public park (PP)	1	Parque de Cabecera	+	SA SO	0 8	0 2 (25)	1 6	0 0
	2	Parque de Marxalenes	+	CP	2	1 (50)	1	0
	3	Parque de Orriols	–	CP	1	0	1	0
	4	Jardines del Real (Viveros)	+	SA CP	0 4	0 2 (50)	3 1	0 0
	5	Parque del Oeste	+	SA CP	6 2	1 (16.7) 0	2 2	0 0
	6	Pl. Enrique Granados	–	SA	6	0	4	0
	7	Jardines de la Glorieta	–	SA CP	1 1	0 0	3 0	0 0
	8	Tramo XII del Cauce del río Turia	–	SO CP	7 1	0 0	1 1	0 0
	9	Tramo VI del Cauce del río Turia	+	SO	10	1 (10)	4	0
	10	Parque Central	–	SO	5	0	2	0
	11	Ludoparc Salka	–	CP	5	0	3	0
	12	Parque Galp	–	CP	2	0	2	0
	13	Pl. de Manuel Laguarda Cubell	–	CP	2	0	2	0
	14	Pl. Dr Torrens	–	SO	3	0	3	0
Total PP	14	35.7% (5/14)		64	10.9% (7/64)	44	0	
Total SO	38	+		22	3	16	0	
Total SA	47	+		29	3	18	0	
Total CP	23	+		13	1	10	0	

+: samples with *Toxocara* eggs; –: samples without *Toxocara* eggs. \* SO: socialization area; SA: sanitary area; CP: children's playground.



**Figure 2.** Types of studied areas. (A): canine sanitary area, (B): socialization area, (C): children's playground.

## 2.2. Feces Analysis

Fecal samples were first macroscopically examined to detect color, consistency, and the presence or absence of mucus, blood, or fibrin. Then, an adaption of the Telemann method was used to recover helminth eggs [33]. Next, 3 g of feces were weighed and mixed with 5% acetic acid at a ratio of 1/5 using a mortar. The mixture was filtered through a strainer

with double gauze, and 5 mL were mixed with 5 mL of diethyl ether and centrifuged for 5 min at  $500\times g$ , after which the supernatant was discarded. Next, 10 mL of zinc sulphate solution (specific gravity  $1.2\text{ g/cm}^3$ ) was added to each tube, vortexed, and centrifuged for 5 min at  $500\times g$ . Finally, tubes were filled with the same solution to form a positive meniscus, and a coverslip was placed on them. After 15 min, samples were examined with an optical microscope.

### 2.3. Soil Analysis

Soil samples were analyzed following a modified version of a sieving technique [32,34]. A measure of 100 g of sample was washed with running tap water, and each sample was sifted through four metal sieves with decreasing pore diameters (1000  $\mu\text{m}$ , 250  $\mu\text{m}$ , 125  $\mu\text{m}$ , and 63  $\mu\text{m}$ ) to gradually eliminate the bigger particles. The residue in the last sieve was flushed into a 1000 mL sedimentation cup filled with water. After 20 min of sedimentation, the supernatant liquid was discarded, and the wash was repeated two more times. After the last wash, the sediment was collected into 15 mL tubes for centrifugation for 5 min at  $500\times g$ . The supernatant was discarded, and then 10 mL of zinc sulphate solution (specific gravity  $1.2\text{ g/cm}^3$ ) were added to each tube, vortexed, and centrifuged for 5 min at  $500\times g$ . Finally, tubes were filled with the same solution to form a positive meniscus and a coverslip was placed on it. After 15 min, samples were examined with an optical microscope. In both coprological and soil analysis, samples were classified as positive or negative, but only samples with viable eggs were considered positive [4]. Due to the close similarity between eggs of *Toxocara canis* and *T. cati*, no attempt was made to differentiate between them.

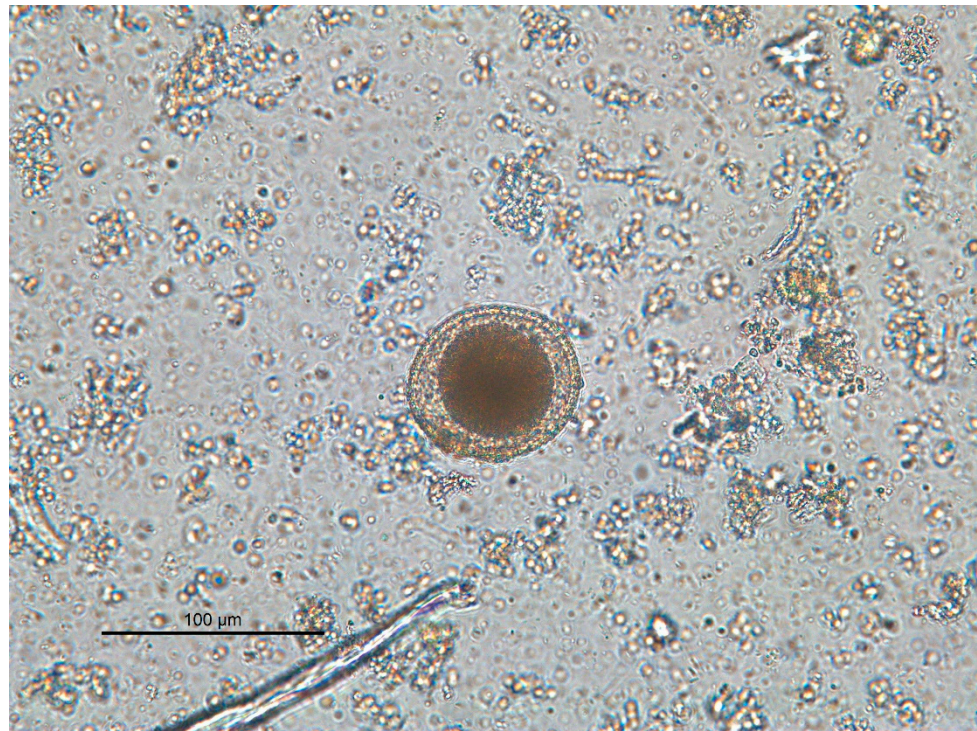
### 2.4. Statistical Analysis

Statistical analysis was performed with statistical package R Commander and RcmdrPlugin. The 95% confidence intervals for prevalence estimates were calculated using the Wilson score interval method. The association between *Toxocara* spp. presence and categorical factors (park, zone, and type of sample) was compared using Pearson's  $\chi^2$  test, and the confidence intervals for prevalence estimates were calculated using the Wilson score interval method. A  $p$ -value  $< 0.05$  was reported as statistically significant.

## 3. Results

The results of the research are presented in the summary Table 1. A total of 108 samples (64 soil and 44 fecal) from 14 public parks were analyzed. Of them, seven soil samples (10.9%) and none of the fecal samples were contaminated, showing a positive relationship between the type of sample and the presence of *Toxocara* eggs ( $p < 0.05$ ) (Figure 3). Stools were identified as dog origin, according to size, aspect, and location, as they were not covered by a substrate. After macroscopical examination, all the fecal samples showed a normal color and consistency, with no presence of mucus, blood, or fibrin. Positive samples were collected from 5/14 (35.7%) different parks. Sanitary areas showed the highest contamination rate, with 30.8% (4/13) of samples being positive, followed by SO for dogs (9.7%; 3/31). All samples collected at CP were negative. No significant differences were found between the examined parks or between the three types of areas.





**Figure 3.** *Toxocara* spp. viable non-infective egg.

#### 4. Discussion

In the last decade, both the number of pet cats and pet dogs has increased significantly worldwide [35]. In urban areas, public parks with canine sanitary areas, socialization areas for dogs, and children's playgrounds are very common. These areas, in which animals defecate, are shared with humans, and represent a serious risk of zoonoses, especially for those children with pica habits. *Toxocara* spp. is one of the most prevalent zoonotic geohelminths that can cause severe pathologies in humans. In this survey, the contamination with *Toxocara* spp. eggs of soil and fecal samples collected from 14 public parks in the city of Valencia was studied.

Surprisingly, none of the examined fecal samples were positive for the presence of *Toxocara* eggs, most likely due to the majority being owned as pets. In Spain, the helminth zoonoses prevention programs in the last years have resulted in better dog pet management, including periodical deworming and feed improvement [36]. Kutdang et al. (2010) realized that mixed dog breeds, more frequent in the stray group, had higher infection rates than exotic breeds [37]. Stray animals are also more susceptible to being infected by ingesting paratenic hosts, such as rodents, which are often carriers for infective larvae [38,39]. Furthermore, dog owners have changed their awareness about cleaning their animals' feces, which contributes to reducing the environmental contamination. Accordingly, although there are not many studies similar to the present one in Spain, and considering that it is not possible to compare this study with others due to the different sampling and detection methods, only 1.3% of fecal samples from Madrid had ascarid (*Toxascaris leonina*) eggs [28]. Other studies, such as the one carried out in Murcia, showed that the risk of infection with intestinal helminths was significantly higher in stray than in household dogs [33]. In addition, Martínez-Moreno et al. (2007) found *T. canis* eggs in 17.7% of stray dogs in Córdoba [30].

In other European countries, the infection of feces with *T. canis* oscillated between 3% in stray dogs from Serbia [40], to 5% in the Greater Lisbon area (Portugal) [31], and 23.4% in Poland [41]. Data from some other surveys related the infection with *T. canis* to the presence of ownerless dogs in South Africa [42], Nigeria [43], and Mexico [44].

Regarding soil samples, we found an infection rate of 10.9%, higher than in other regions in Spain. For instance, in Córdoba, the prevalence was 3.8% [30], and in Murcia, it was 1.24% [32]. These results are in line with the meta-analysis carried out by Fakhri et al. (2018), in which the mean prevalence of *Toxocara* spp. in soil samples in Spain was estimated at 5–8% [5]. In Madrid, however, 16.4% of soil samples were contaminated with *Toxocara* spp. [28]. In general, data from previous studies in Spain were lower than 18% of the pooled prevalence in Europe [5]. As is already known, ascarid eggs die with temperatures higher than 37 °C, low relative humidity, and direct exposure to the sun [45]. Conversely, higher prevalence has been significantly associated with high geographic longitude, low latitude, low temperature, and high relative humidity [4,5]. Marked fluctuations in relative humidity were registered throughout the months of the present study, with the sampling period being the period with the lowest relative humidity of the year (mean of 60%, AEMET, 2018). According to this, the average temperatures in Valencia are lower than in Murcia and Córdoba, but higher than those registered in Madrid and other European countries. It is also important to consider that sampling was carried out during autumn, winter, and spring, but not during the hot and dry summer months when egg mortality increases in the environment. Thus, it would be expected to find an even lower prevalence in this study. In any case, sand soil represents a threat of human infection, not only for children playing in parks, but because eggs in the soil can reach the homes transferred from animal's feet, as well as from the soles of people's shoes [46]. Furthermore, it has been demonstrated that a single egg is enough to cause HT in an immunocompromised human being [47,48].

Considering the number of the analyzed parks, five (35.7%) were contaminated, a value within 16.4% of positive areas for the presence of *Toxocara* spp. in Madrid [29] and 45.5% for ascarids (*Toxocara* and *Toxascaris*) in Córdoba [30]. A recent study in New York showed that 100% of the public spaces were infected with *Toxocara* spp., with most of the eggs being identified as *T. cati* [49]. The number of feral cats in public parks in Spain is quite low compared with other countries such as the United States and, although we did not identify the species, a high density of cats in public parks may contribute to a high prevalence of *Toxocara* spp. eggs [5]. In this sense, cats can easily access every location of the park, even fenced areas, by jumping. In addition, dog feces are usually removed by the owners, while cats usually bury theirs, contributing to soil contamination [50]. Furthermore, while cats can shed *T. cati* eggs throughout their lives, dogs are more commonly infected when they are puppies [51–54]. We did not attempt to differentiate species in our study, since both are zoonotic and equally important in the study, and discrimination by optical microscope is not easy [55].

Sanitary areas for dogs were the most contaminated. These results were expected, since they are the most frequented ones by animals. Although the study's findings suggest that pets in these areas of Valencia are well dewormed, owners are not used to removing feces, so eggs can reach the soil easily. Furthermore, the presence of stools attracts other stray animals (including dogs and cats) to defecate in the same place [54,56]. Socialization areas presented a lower prevalence for *Toxocara* spp. eggs. A high number of pets can be found in these places throughout the day. However, contrary to what has been described for sanitary areas, pet owners are more likely to remove fecal droppings for their animals to play in more hygienic conditions. Signs are present at the entrance of these areas specifying the obligation of owners to collect their pet's feces into bags, and it is also common to find brooms, dustpans, and bag dispensers for the removal and disposal of animal feces. On the other hand, no positive samples were found at the children's playgrounds, probably due to the preventive measures adopted by the council, including the prohibition of the access animals to them. Furthermore, most of these areas are fenced, avoiding the entry of animals. Moreover, floors are comprised of rubber material, and so the possibility of animal infection by contaminated soil is reduced.

The fact that we did not find eggs in the feces, but did in the soil, is consistent with the results of previous studies in which prevalence rates for soil samples were higher than for fecal samples [28,31]. As mentioned above, the positive soil samples probably were

from stray dogs, but also may have been from feral cats and cat feces, representing a more important potential source of environmental contamination with zoonotic parasites than dog feces [57]. On the other hand, fecal analysis in the study represented animals sampled at one moment, while soil analysis may represent the accumulated concentration of more than one animal's feces over a period, considering the high resistance of *Toxocara* spp. eggs in the environment [58].

## 5. Conclusions

Ascarids are common parasites in dogs and cats, and in this study, we found them in soil samples taken from several public parks examined in the city of Valencia, representing a risk of zoonosis. As is already known, the infection may become effective not only by hands-on contact with sand, but also by transferring the eggs to peoples' houses on feet and shoes. Thus, our results suggest a more exhaustive control on the contamination of soil-transmitted helminths in public areas, as well as improved preventive measures. Some of the measures recommended to decrease the threat of toxocariasis in children—for whom it is especially dangerous—may include the following: elimination or reduction of intestinal infections in definitive hosts by regular anthelmintic treatments and fecal testing, fencing of sanitary and socialization areas to avoid the access of stray dogs, control of stray animals, removing feces from the soil, substitution of sand soil by a rubber or other compact material in walking areas, and educational programs for the public and one health approach.

**Author Contributions:** Conceptualization, J.S.-M.; Methodology, B.R.K.; Data curation: L.L.; Investigation, B.R.K.; data—original draft preparation, B.R.K. and J.S.-M.; writing—review and editing: M.M.G.-T. All authors have read and agreed to the published version of the manuscript.

**Funding:** This research received no external funding.

**Institutional Review Board Statement:** No ethical approval was required for this study.

**Informed Consent Statement:** Not applicable.

**Acknowledgments:** We are grateful to the Faculty of Veterinary Medicine, Universidad Cardenal Herrera-CEU, CEU Universities and to the Faculty of Veterinary Medicine and Experimental Sciences, Universidad Católica de Valencia.

**Conflicts of Interest:** None of the authors of this paper has a financial or personal relationship with other people or organizations that could inappropriately influence or bias the content of the paper.

## References

1. World Health Organization and Partners Unveil New Coordinated Approach to Treat Millions Suffering from Neglected Tropical Disease. 2006. Available online: [http://whqlibdoc.who.int/press\\_release/2006/PR](http://whqlibdoc.who.int/press_release/2006/PR) (accessed on 25 March 2022).
2. Torgerson, P.R.; Macpherson, C.N. The socioeconomic burden of parasitic zoonoses: Global trends. *Vet. Parasitol.* **2011**, *182*, 79–95. [CrossRef]
3. CDC. Parasites—Neglected Parasitic Infections (NPIs). 2021. Available online: <https://www.cdc.gov/parasites/npi/index.html> (accessed on 23 March 2021).
4. Abou-El-Naga, I.F. Developmental stages and viability of *Toxocara canis* eggs outside the host. *Biomédica* **2018**, *38*, 189–197. [CrossRef]
5. Fakhri, Y.; Gasser, R.B.; Rostami, A.; Fan, C.-K.; Ghasemi, S.; Javani, M.; Bayani, M.; Armoon, B.; Moradi, B. *Toxocara* eggs in public places worldwide—A systematic review and meta-analysis. *Environ. Pollut.* **2018**, *242*, 1467–1475. [CrossRef]
6. Traversa, D. Pet roundworms and hookworms: A continuing need for global worming. *Parasites Vectors* **2012**, *5*, 91. [CrossRef]
7. Wang, S.; Li, H.; Yao, Z.; Li, P.; Wang, D.; Zhang, H.; Xie, Q.; Zhang, Z.; Li, X. *Toxocara* infection: Seroprevalence and associated risk factors among primary school children in central China. *Parasite* **2020**, *27*, 30. [CrossRef]
8. Ma, G.; Holland, C.V.; Wang, T.; Hofmann, A.; Fan, C.-K.; Maizels, R.M.; Hotez, P.J.; Gasser, R.B. Human toxocariasis. *Lancet Infect. Dis.* **2017**, *18*, e14–e24. [CrossRef]
9. Li, L.; Gao, W.; Yang, X.; Wu, D.; Bi, H.; Zhang, S.; Huang, M.; Yao, X. Asthma and toxocariasis. *Ann. Allergy Asthma Immunol.* **2014**, *113*, 187–192. [CrossRef]
10. Walsh, M.G.; Haseeb, M.A. Toxocariasis and lung function: Relevance of a neglected infection in an urban landscape. *Acta Parasitol.* **2014**, *59*, 126–131. [CrossRef]



11. Cianferoni, A.; Schneider, L.; Schantz, P.M.; Brown, D.; Fox, L.M. Visceral Larva Migrans Associated with Earthworm Ingestion: Clinical Evolution in an Adolescent Patient. *Pediatrics* **2006**, *117*, e336–e339. [CrossRef]
12. Smith, H.; Holland, C.; Taylor, M.; Magnaval, J.-F.; Schantz, P.; Maizels, R. How common is human toxocariasis? Towards standardizing our knowledge. *Trends Parasitol.* **2009**, *25*, 182–188. [CrossRef]
13. Pinelli, E.; Aranzamendi, C. *Toxocara* infection and its association with allergic manifestations. *Endocr. Metab. Immune Disord. Drug Targets* **2012**, *12*, 33–44. [CrossRef]
14. Yu, T.; Zhao, L.-N.; Fan, M.-J.; Wu, H.; Chen, Q.-K. Visceral larva migrans associated with earthworm and gecko ingestion: A case report. *J. Med. Case Rep.* **2012**, *6*, 210. [CrossRef]
15. Aghaei, S.; Riahi, S.M.; Rostami, A.; Mohammadzadeh, I.; Javanian, M.; Tohidi, E.; Foroutan, M.; Dooki, M.E. *Toxocara* spp. infection and risk of childhood asthma: A systematic review and meta-analysis. *Acta Trop.* **2018**, *182*, 298–304. [CrossRef]
16. Nicoletti, A.; García, H.H.; Cicero, C.E.; Portaro, G.; Giuliano, L.; Patti, F.; Sofia, V.; Noh, J.; Handali, S.; Zappia, M. Lack of evidence for *Toxocara* infection in Italian myelitis patients. *Neurol. Sci.* **2020**, *41*, 239–241. [CrossRef]
17. Despommier, D. Toxocariasis: Clinical Aspects, Epidemiology, Medical Ecology, and Molecular Aspects. *Clin. Microbiol. Rev.* **2003**, *16*, 265–272. [CrossRef]
18. Auer, H.; Walochnik, J. Toxocariasis and the clinical spectrum. *Adv. Parasitol.* **2020**, *109*, 111–130. [CrossRef]
19. Nicoletti, A. Neurotoxocariasis. *Adv. Parasitol.* **2020**, *109*, 219–231. [CrossRef]
20. Minet, J.C.; Gratzl, O. Cerebral toxocariasis: A possible cause of epileptic seizure in children. *Child's Nerv. Syst.* **2004**, *20*, 468–472. [CrossRef]
21. Walsh, M.G.; Haseeb, M. Reduced cognitive function in children with toxocariasis in a nationally representative sample of the United States. *Int. J. Parasitol.* **2012**, *42*, 1159–1163. [CrossRef]
22. Caldera, F.; Burlone, M.E.; Genchi, C.; Pirisi, M.; Bartoli, E. *Toxocara* encephalitis presenting with autonomous nervous system involvement. *Infection* **2012**, *41*, 691–694. [CrossRef]
23. Fan, C.-K.; Holland, C.V.; Loxton, K.; Barghouth, U. Cerebral Toxocariasis: Silent Progression to Neurodegenerative Disorders? *Clin. Microbiol. Rev.* **2015**, *28*, 663–686. [CrossRef]
24. Deshayes, S.; Bonhomme, J.; De La Blanchardière, A. Neurotoxocariasis: A systematic literature review. *Infection* **2016**, *44*, 565–574. [CrossRef]
25. Holland, C.V.; Hamilton, C.M. The significance of cerebral toxocariasis: A model system for exploring the link between brain involvement, behaviour and the immune response. *J. Exp. Biol.* **2013**, *216*, 78–83. [CrossRef]
26. Won, K.Y.; Kruszon-Moran, D.; Jones, J.L.; Schantz, P.M. National Seroprevalence and Risk Factors for Zoonotic *Toxocara* spp. Infection. *Am. J. Trop. Med. Hyg.* **2008**, *79*, 552–557. [CrossRef]
27. Manini, M.P.; Marchioro, A.C.; Cristiane, M.; Nishi, L.; Falavigna-Guilherme, A. Association between contamination of public squares and seropositivity for *Toxocara* spp. in children. *Vet. Parasitol.* **2012**, *188*, 4852. [CrossRef]
28. Dado, D.; Izquierdo, F.; Vera, O.; Montoya, A.; Mateo, M.; Fenoy, S.; Galván, A.L.; García, S.; García, A.; Aránguez, E.; et al. Detection of Zoonotic Intestinal Parasites in Public Parks of Spain. Potential Epidemiological Role of Microsporidia. *Zoonoses Public Health* **2011**, *59*, 23–28. [CrossRef]
29. Toledo Seco, C.I.; de Armas Hernández, F.; del Castillo Remiro, A.; Arévalo Morales, P.; Piñero Barroso, J.E.; Valladares Hernández, B. La contaminación parasitaria de parques y jardines como problema de salud pública. Datos de la isla de Tenerife [Parasite contamination of parks and gardens as a public health problem. Data of the island of Tenerife]. *Rev. Sanid. Hig. Pública* **1994**, *68*, 617–622.
30. Martínez-Moreno, F.; Hernández, S.; López-Cobos, E.; Becerra, C.; Acosta, I.; Martínez-Moreno, A. Estimation of canine intestinal parasites in Córdoba (Spain) and their risk to public health. *Vet. Parasitol.* **2007**, *143*, 7–13. [CrossRef]
31. Otero, D.; Alho, A.M.; Nijssse, R.; Roelfsema, J.; Overgaauw, P.; de Carvalho, L.M. Environmental contamination with *Toxocara* spp. eggs in public parks and playground sandpits of Greater Lisbon, Portugal. *J. Infect. Public Health* **2018**, *11*, 94–98. [CrossRef]
32. De Ybáñez, M.R.R.; Garijo, M.M.; Alonso, F.D. Prevalence and viability of eggs of *Toxocara* spp. and *Toxascaris leonina* in public parks in eastern Spain. *J. Helminthol.* **2001**, *75*, 169–173.
33. Martínez-Carrasco, C.; Berriatua, E.; Garijo, M.; Martínez, J.; Alonso, F.D.; de Ybáñez, R.R. Epidemiological Study of Non-systemic Parasitism in Dogs in Southeast Mediterranean Spain Assessed by Coprological and Post-mortem Examination. *Zoonoses Public Health* **2007**, *54*, 195–203. [CrossRef] [PubMed]
34. De Ybáñez, M.R.; Garijo, M.; Goyena, M.; Alonso, F. Improved methods for recovering eggs of *Toxocara canis* from soil. *J. Helminthol.* **2000**, *74*, 349–353. [CrossRef] [PubMed]
35. Greene, C.E. *Infectious Diseases of the Dog and Cat-E-Book*; New York Elsevier Health Sciences: New York, NY, USA, 2013; ISBN 9781416061304.
36. ESCCAP. European Scientific Counsel Companion Animal Parasites ESCCAP Guía No. 1. Control de Vermes en Perros y Gatos. First Edition Published in 2011. 2021. Available online: <https://www.esccap.es/wp-content/uploads/2022/03/ESCCAP-1-6ed.pdf> (accessed on 6 March 2022).
37. Kutdang, E.T.; Bukbuk, D.N.; Ajayi, J.A. The prevalence of intestinal helminths of dogs (*Canis familiaris*) in Jos, Plateau State Nigeria. *Researcher* **2010**, *2*, 51–56.
38. Dubinský, P.; Havasiová-Reiterová, K.; Peťko, B.; Hovorka, I.; Tomašovičová, O. Role of small mammals in the epidemiology of toxocariasis. *Parasitology* **1995**, *110*, 187–193. [CrossRef] [PubMed]



39. Antolová, D.; Reiterová, K.; Miterpakova, M.; Stanko, M.; Dubinský, P. Circulation of *Toxocara* spp. in suburban and rural ecosystems in the Slovak Republic. *Vet. Parasitol.* **2004**, *126*, 317–324. [[CrossRef](#)] [[PubMed](#)]
40. Sommer, M.F.; Zdravković, N.; Vasić, A.; Grimm, F.; Silaghi, C. Gastrointestinal parasites in shelter dogs from Belgrade, Serbia. *Vet. Parasitol. Reg. Stud. Rep.* **2017**, *7*, 54–57. [[CrossRef](#)]
41. Felsmann, M.; Michalski, M.; Felsmann, M.; Sokół, R.; Szarek, J.; Strzyżewska-Worotyńska, E. Invasive forms of canine endoparasites as a potential threat to public health—A review and own studies. *Ann. Agric. Environ. Med.* **2017**, *24*, 245–249. [[CrossRef](#)]
42. Minnaar, W.N.; Krecek, R.C.; Fourie, L.J. Helminths in dogs from a peri-urban resource-limited community in Free State Province, South Africa. *Vet. Parasitol.* **2002**, *107*, 343–349. [[CrossRef](#)]
43. Sowemimo, O.A. The prevalence and intensity of gastrointestinal parasites of dogs in Ile-Ife, Nigeria. *J. Helminthol.* **2009**, *83*, 27–31. [[CrossRef](#)]
44. Medina-Pinto, R.A.; Rodríguez-Vivas, R.I.; Bolio-González, M.E. Zoonotic intestinal nematodes in dogs from public parks in Yucatán, México. *Biomédica* **2018**, *38*, 105–110. [[CrossRef](#)]
45. Azam, D.; Ukpai, O.M.; Said, A.; Abd-Allah, G.A.; Morgan, E.R. Temperature and the development and survival of infective *Toxocara canis* larvae. *Parasitol. Res.* **2011**, *110*, 649–656. [[CrossRef](#)] [[PubMed](#)]
46. Panova, O.A.; Khrustalev, A.V. Dog walking brings *Toxocara* eggs to people's homes. *Vet. Parasitol.* **2018**, *262*, 16–19. [[CrossRef](#)] [[PubMed](#)]
47. Schmidt, G.; Roberts, L. *Foundations of Parasitology*, 8th ed.; McGraw Hill: New York, NY, USA, 2008.
48. Dutra, G.F.; Pinto, N.S.F.; Avila, L.F.D.C.D.; Dutra, P.C.; Telmo, P.D.L.; Rodrigues, L.H.; Silva, A.M.W.A.; Scaini, C.J. Risk of infection by the consumption of liver of chickens inoculated with low doses of *Toxocara canis* eggs. *Vet. Parasitol.* **2014**, *203*, 87–90. [[CrossRef](#)] [[PubMed](#)]
49. Tyungu, D.L.; McCormick, D.; Lau, C.L.; Chang, M.; Murphy, J.R.; Hotez, P.J.; Mejia, R.; Pollack, H. *Toxocara* species environmental contamination of public spaces in New York City. *PLoS Negl. Trop. Dis.* **2020**, *14*, e0008249. [[CrossRef](#)] [[PubMed](#)]
50. Uga, S.; Minami, T.; Nagata, K. Defecation Habits of Cats and Dogs and Contamination by *Toxocara* Eggs in Public Park Sandpits. *Am. J. Trop. Med. Hyg.* **1996**, *54*, 122–126. [[CrossRef](#)]
51. Levine, N.D. *Nematode Parasites of Domestic Animals and of Man*; Burgess Publishing: Minneapolis, MN, USA, 1980; pp. 260, 276.
52. Little, S.E. *Toxocara cati* (Proceedings). In *CVC in Washington, DC Proceedings*; Care, U.A., Ed.; Washington, DC, USA, 1 April 2010. Available online: <https://www.dvm360.com/view/toxocara-cati-proceedings> (accessed on 12 March 2022).
53. Lucio-Forster, A.; Barbecho, J.S.M.; Mohammed, H.O.; Kornreich, B.G.; Bowman, D.D. Comparison of the prevalence of *Toxocara* egg shedding by pet cats and dogs in the U.S.A., 2011–2014. *Vet. Parasitol. Reg. Stud. Rep.* **2016**, *5*, 1–13. [[CrossRef](#)]
54. Aziz, A.A.; Hassan, A.A.; Elmahallawy, E.K.; Elshahawy, I.S.; Almuzaini, A.M. Prevalence and associated risk factors of *Toxocara* infection in dogs in northern and southern Egypt. *Vet. Parasitol. Reg. Stud. Rep.* **2019**, *17*, 100305. [[CrossRef](#)]
55. Mizgajska-Wiktor, H.; Uga, S. Exposure and environmental contamination. In *Toxocara the Enigmatic Parasite*; Holland, C.V., Smith, H.V., Eds.; CABI Publishing: Oxfordshire, UK; pp. 211–227.
56. Klimpel, S.; Heukelbach, J.; Pothmann, D.; Rückert, S. Gastrointestinal and ectoparasites from urban stray dogs in Fortaleza (Brazil): High infection risk for humans? *Parasitol. Res.* **2012**, *107*, 713–719. [[CrossRef](#)]
57. Szwabe, K.; Blaszkowska, J. Stray dogs and cats as potential sources of soil contamination with zoonotic parasites. *Ann. Agric. Environ. Med.* **2017**, *24*, 39–43. [[CrossRef](#)]
58. Dunsmore, J.; Thompson, R.; Bates, I. Prevalence and survival of *Toxocara canis* eggs in the urban environment of Perth, Australia. *Vet. Parasitol.* **1984**, *16*, 303–311. [[CrossRef](#)]